

State of Rhode Island and Providence Plantations

Budget



Fiscal Year 2016

Volume IV – Public Safety, Natural Resources and Transportation

Gina M. Raimondo, Governor

Agency

Judicial Department - Constitution

Agency Mission

In our mission to administer justice while maintaining our independence, we are duty bound to act with unfailing honor to serve and protect the ideals of democracy for the citizens of this state.

Agency Description

Rhode Island has a unified court system composed of six statewide courts. The Supreme Court is the court of last resort, the Superior Court is the court of general jurisdiction, and the Family, District, Traffic Tribunal, and Workers' Compensation Courts are courts of limited jurisdiction.

The entire system in Rhode Island is state-funded with the exception of probate courts, which are the responsibility of cities and towns, and the municipal courts, which are local courts of limited jurisdiction. The Chief Justice of the Supreme Court is the executive head of the Rhode Island Judiciary and has authority over the judicial budget. The Chief Justice appoints the State Court Administrator and an administrative staff to handle budgetary and general administrative functions. Under the direction of the Chief Justice, the State Court Administrator has control of judicial appropriations for all state courts, except those as provided otherwise by law. Each court has responsibility over its own operations and has a chief judge who appoints an administrator to handle internal court management.

Statutory History

The Judicial is one of the three branches of government defined in the Rhode Island Constitution. The powers and jurisdictions of the six courts are identified in the Rhode Island General Laws as follows: Title 8 Chapter 1, Supreme Court; Title 8 Chapter 2, Superior Court; Title 8 Chapter 10, Family Court; Title 8 Chapter 8, District Court; Title 28 Chapter 30, Workers' Compensation Court; and, Title 8 Chapter 8.2, Traffic Tribunal.

The budgetary and finance controls of the Judiciary are identified in the Rhode Island General Laws as follows: Title 8 Section 8-15-4, Appointment of Court Administrator and Assistants; Title 35 Section 35-3-1, Budget Officer – General Powers and Duties; Title 36 Section 36-4-2.1, Exemption from Merit System; Title 36 Section 36-4-16.4, Salaries of Directors, Judges, and Workers' Compensation Judges; Title 36 Section 36-6-1, Controller – Duties in General; and Title 37 Section 37-8-1, State House – State Office Building – Courthouses.

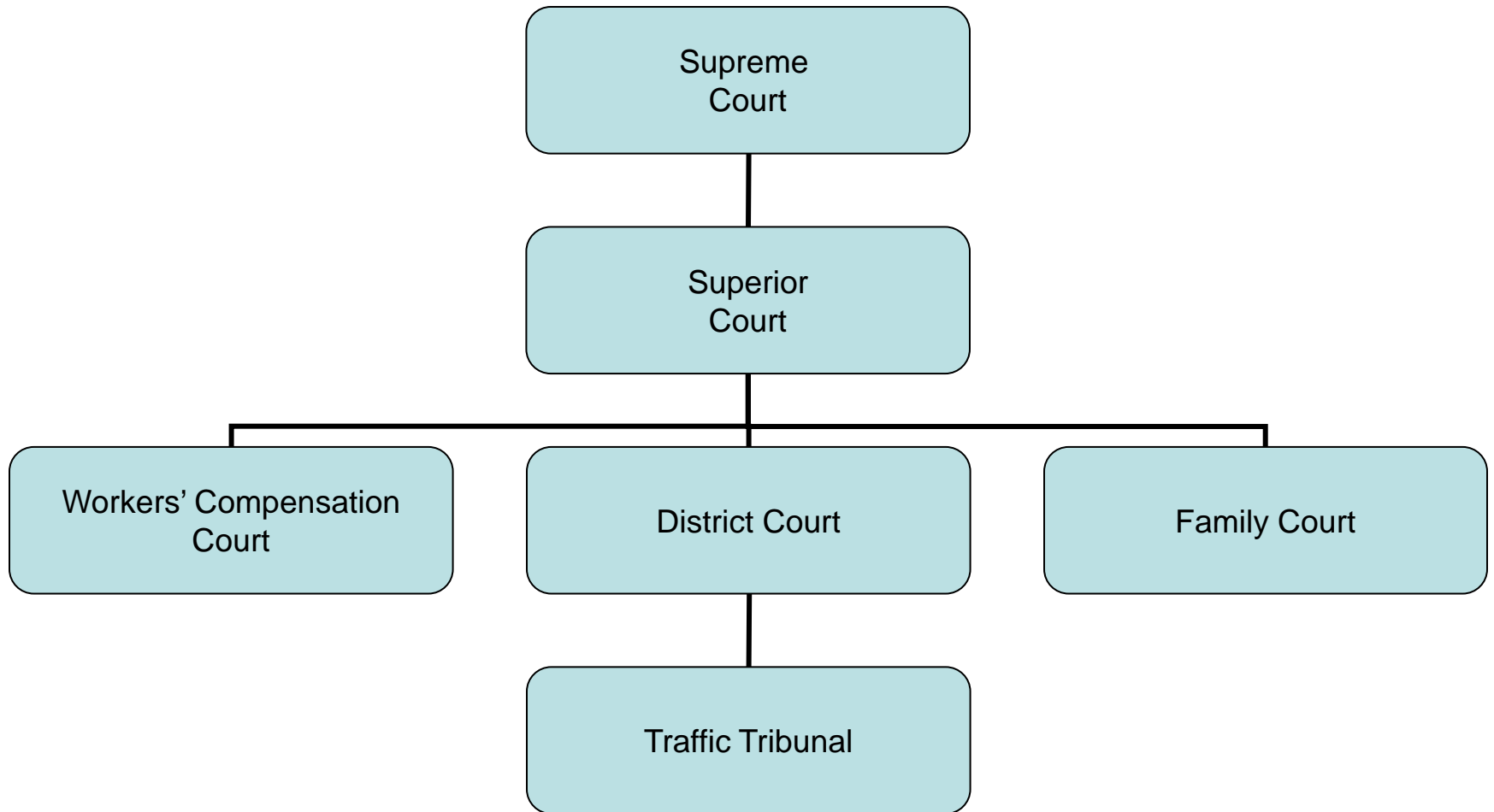
Budget

Judicial Department - Constitution

	FY 2013 Audited	FY 2014 Audited	FY 2015 Enacted	FY 2015 Revised	FY 2016 Recommend
Expenditures By Program					
Supreme Court	35,142,134	34,827,694	33,830,617	35,183,988	35,435,932
Superior Court	21,804,400	22,045,433	22,493,957	23,085,632	23,560,346
Family Court	21,202,853	22,352,346	20,955,333	23,356,449	23,932,580
District Court	11,825,392	12,163,405	11,801,337	12,239,032	12,554,797
Traffic Tribunal	7,933,583	8,326,527	8,760,119	8,430,692	8,542,221
Worker's Compensation Court	7,359,644	7,228,824	7,712,640	7,614,932	7,763,807
Judicial Tenure & Discipline	113,327	107,834	115,513	119,161	121,527
Total Expenditures	\$105,381,333	\$107,052,063	\$105,669,516	\$110,029,886	\$111,911,210
Expenditures By Object					
Personnel	77,958,128	80,944,971	82,121,565	84,155,070	86,310,075
Operating Supplies and Expenses	12,785,276	11,167,757	10,607,659	12,328,515	12,186,613
Assistance and Grants	10,470,823	10,652,587	10,951,188	10,483,921	10,341,635
Subtotal: Operating Expenditures	101,214,227	102,765,315	103,680,412	106,967,506	108,838,323
Capital Purchases and Equipment	4,167,106	4,286,748	1,989,104	3,062,380	3,072,887
Total Expenditures	\$105,381,333	\$107,052,063	\$105,669,516	\$110,029,886	\$111,911,210
Expenditures By Funds					
General Revenue	87,871,336	91,551,391	91,636,668	94,058,445	95,797,046
Federal Funds	3,411,809	2,986,862	1,909,247	3,190,765	3,217,720
Restricted Receipts	10,393,917	10,426,434	10,773,601	11,346,527	10,396,444
Operating Transfers from Other Funds	3,704,271	2,087,376	1,350,000	1,434,149	2,500,000
Total Expenditures	\$105,381,333	\$107,052,063	\$105,669,516	\$110,029,886	\$111,911,210
FTE Authorization	723.3	726.3	723.3	723.3	723.3

The Agency

Judicial Department



Personnel

Judicial Department - Constitution Agency Summary

	Grade	FY 2015		FY 2016	
		FTE	Cost	FTE	Cost
Unclassified		723.3	53,361,542	723.3	54,662,407
Subtotal		723.3	\$53,361,542	723.3	\$54,662,407
Overtime		-	466,542	-	413,044
Stipends		-	15,100	-	15,100
Temporary and Seasonal		-	577,545	-	744,900
Turnover		-	(\$2,215,437)	-	(\$2,073,259)
Subtotal		-	(\$1,156,250)	-	(\$900,215)
Total Salaries		723.3	\$52,205,292	723.3	\$53,762,192
Benefits					
Payroll Accrual			294,292		297,963
FICA			3,673,240		3,751,714
Retiree Health			2,789,551		2,502,856
Health Benefits			8,091,825		8,791,745
Retirement			13,030,598		13,252,269
Workers Compensation			1,800		1,800
Subtotal			\$27,881,306		\$28,598,347
Total Salaries and Benefits		723.3	\$80,086,598	723.3	\$82,360,539
Cost Per FTE Position (Excluding Temporary and Seasonal)			\$109,930		\$112,843
Statewide Benefit Assessment			\$2,220,187		\$2,263,182
Payroll Costs		723.3	\$82,306,785	723.3	\$84,623,721
Purchased Services					
Information Technology			519,140		549,140
Clerical and Temporary Services			245,719		53,214
Management & Consultant Services			126,426		127,000
Legal Services			413,985		413,985
Other Contracts			388,323		388,323
Training and Educational Services			56,640		56,640
Design and Engineering Services			86,052		86,052
Medical Services			12,000		12,000
Subtotal			\$1,848,285		\$1,686,354
Total Personnel		723.3	\$84,155,070	723.3	\$86,310,075
Distribution By Source Of Funds					
General Revenue		653.0	\$73,751,712	653.0	\$75,683,693
Federal Funds		12.3	\$1,961,597	12.3	\$2,004,727
Restricted Receipts		58.0	\$8,441,761	58.0	\$8,621,655
Total All Funds		723.3	\$84,155,070	723.3	\$86,310,075

The Program

Judicial Department - Constitution Supreme Court

Program Mission

Provide timely review of all decisions appealed from the lower courts.

Provide overall administrative direction to the unified court system.

Regulate the admission, registration, and discipline of attorneys to the Rhode Island Bar.

Program Description

The Supreme Court Program includes the budget for the Court as well as the Administrative Office of State Courts, and the State Law Library.

The Court portion of the budget covers the justices, their secretarial and legal staff, the law clerk department, and the Supreme Court Clerk's Office. Through this portion of the budget the Supreme Court fulfills its role as the court of last resort. The Court also renders advisory opinions to the legislative and executive branches of government; issues writs of habeas corpus, mandamus, certiorari and certain other prerogative writs; and regulates the admission, registration and discipline of members of the Rhode Island Bar.

Administrative services include all budgetary, personnel and purchasing functions; technology services; facilities and operations, which includes the maintenance of courthouse and judicial buildings as well as security; programming for judicial education; the collection of court-ordered restitution, fines, fees and costs; judicial records center; and research and statistical analysis.

The State Law Library is the only complete, public legal reference service in Rhode Island, and it operates under the Supreme Court. The Library has over 110,000 volumes and also provides access to computer aided legal research.

Other major activities of the Supreme Court include domestic violence training and monitoring, mandatory continuing legal education, appellate screening, alternative dispute resolution, disciplinary counsel, community outreach and public relations, and the interpreter program.

Statutory History

The Supreme Court is the only constitutionally established court and is identified in Article X of the Rhode Island State Constitution. The organization, jurisdiction and powers of the Supreme Court are described in Title 8 Chapter 1 of the Rhode Island General Laws, and the administrative authority of the court is established by Title 8 Chapter 15. Other statutes relating to the Supreme Court include Title 8 Chapters 3 through 7 of the Rhode Island General Laws.

The Budget

Judicial Department - Constitution Supreme Court

	2013 Audited	2014 Audited	2015 Enacted	2015 Revised	2016 Recommend
Expenditures By Subprogram					
Supreme Court Operations	31,750,390	31,216,042	30,288,377	31,641,748	31,893,692
Defense of Indigents	3,391,744	3,611,652	3,542,240	3,542,240	3,542,240
Total Expenditures	\$35,142,134	\$34,827,694	\$33,830,617	\$35,183,988	\$35,435,932
Expenditures By Object					
Personnel	18,899,162	19,658,688	19,796,444	19,753,563	20,276,847
Operating Supplies and Expenses	7,982,434	6,799,613	7,463,567	7,941,812	7,764,225
Assistance and Grants	4,260,777	4,629,281	4,663,502	4,643,615	4,543,615
Subtotal: Operating Expenditures	31,142,373	31,087,582	31,923,513	32,338,990	32,584,687
Capital Purchases and Equipment	3,999,761	3,740,112	1,907,104	2,844,998	2,851,245
Total Expenditures	\$35,142,134	\$34,827,694	\$33,830,617	\$35,183,988	\$35,435,932
Expenditures By Funds					
General Revenue	29,009,184	29,756,749	29,862,882	30,366,868	30,649,257
Federal Funds	75,622	168,518	151,954	120,627	123,289
Restricted Receipts	2,353,057	2,815,051	2,465,781	3,262,344	2,163,386
Operating Transfers from Other Funds	3,704,271	2,087,376	1,350,000	1,434,149	2,500,000
Total Expenditures	\$35,142,134	\$34,827,694	\$33,830,617	\$35,183,988	\$35,435,932

Personnel

Judicial Department - Constitution Supreme Court

	Grade	FY 2015		FY 2016	
		FTE	Cost	FTE	Cost
Unclassified					
CHIEF JUSTICE (SUPREME COURT)	08809F	1.0	226,396	1.0	230,925
ASSOCIATE JUSTICE	08808F	4.0	772,015	4.0	787,238
STATE COURT ADMINISTRATOR	08848A	1.0	170,953	1.0	174,322
CHIEF DISCIPLINARY COUNSEL	08844A	1.0	148,622	1.0	151,538
EXECUTIVE ASSISTANT FOR POLICY AND	08843A	1.0	144,809	1.0	147,669
EXECUTIVE DIRECTOR (JUDICIAL)	08844A	1.0	143,647	1.0	146,494
DIRECTOR OF FINANCE/ASSOCIATE	08844A	1.0	143,272	1.0	146,065
DEPUTY ADMINISTRATOR (STATE COURTS)	08845A	1.0	141,295	1.0	144,121
CHIEF SUPERVISORY CLERK	08842A	2.0	263,455	2.0	268,623
DEPUTY EXECUTIVE	08841A	1.0	129,124	1.0	131,657
CLERK PRO-TEMPORE	08841A	1.0	115,344	1.0	117,651
ASSISTANT ADMINISTRATOR/POLICY & PROGRAMS	04437A	1.0	109,156	1.0	111,299
DEPUTY DISCIPLINARY COUNSEL	08837A	1.0	109,092	1.0	111,191
ASSISTANT ADMINISTRATOR/POLICY & PROGRAMS	08837A	1.0	107,468	1.0	109,567
CHIEF STAFF ATTORNEY	08835A	1.0	105,209	1.0	107,225
DIRECTOR OF CONSUMER	08835A	1.0	102,365	1.0	104,369
ASSISTANT DIRECTOR POLICY OFFICE	08839A	7.0	715,174	7.0	733,965
PUBLIC INFORMATION OFFICER	04435A	1.0	101,573	1.0	103,351
PRINCIPAL COURT FUNCTIONAL SPECIALIST	04436A	1.0	101,003	1.0	102,987
STAFF ATTORNEY IV	00834A	1.0	97,923	1.0	99,817
LAW LIBRARIAN	08836A	1.0	94,384	1.0	96,271
SOFTWARE SUPPORT SPECIALIST	04433A	5.0	467,265	5.0	475,897
ASSISTANT DISCIPLINARY COUNSEL	08831A	2.0	175,895	2.0	179,359
SENIOR DEVELOPER (JUDICIAL)	08835A	1.0	85,279	1.0	86,992
EXECUTIVE DIRECTOR/EXECUTIVE	08831A	1.0	84,207	1.0	85,828
ADMINISTRATIVE CLERK	08829A	1.0	83,879	1.0	85,481
PROJECT MANAGER	04430A	5.0	410,640	5.0	418,358
PRINCIPAL SUPERVISORY CLERK	08830A	2.0	161,241	2.0	164,404
ADMINISTRATIVE ASSISTANT	04429A	3.0	238,031	3.0	242,767
ASSISTANT ADMINISTRATOR/MANAGEMENT AND	08834A	1.0	79,046	1.0	81,836
SPECIAL ASSISTANT	08829A	2.0	158,007	2.0	161,143
CONFIDENTIAL INVESTIGATOR	08831A	1.0	77,379	1.0	78,927
STAFF ATTORNEY	08829A	4.7	355,622	4.7	362,666
FISCAL MANAGEMENT OFFICER (JUDICIAL)	08832A	1.0	75,335	1.0	78,077
ADMINISTRATIVE CLERK OF OFFICE SERVICES	04427A	1.0	73,330	1.0	74,705
PROJECT MANAGER (JUDICIAL)	08830A	2.0	145,239	2.0	148,151
STAFF ATTORNEY II	08830A	2.0	144,673	2.0	150,762
PRINCIPAL DEPUTY CLERK (SYSTEMS)	05725A	1.0	72,179	1.0	73,507
SENIOR FISCAL OFFICER (JUDICIAL)	04432A	1.0	70,756	1.0	74,888
COORDINATOR, SPECIAL PROJECTS	08827A	6.0	417,754	6.0	426,081
PRINCIPAL ASSISTANT ADMINISTRATOR	08825A	1.0	68,448	1.0	69,788
SPECIAL ASSISTANT (JUDICIAL)	08829A	1.0	65,622	1.0	67,938
BAR ADMINISTRATOR (JUDICIAL)	08829A	1.0	64,708	1.0	69,415
PRINCIPAL ADMINISTRATIVE CLERK	04425A	2.0	128,661	2.0	131,221
PRINCIPAL DEPUTY CLERK (SYSTEMS)	08825A	1.0	64,052	1.0	65,333

Personnel

Judicial Department - Constitution Supreme Court

	Grade	FY 2015		FY 2016	
		FTE	Cost	FTE	Cost
OFFICE MANAGER	04424A	3.0	184,623	3.0	188,231
PRINCIPAL ASSISTANT ADMINISTRATOR	08825A	2.0	122,280	2.0	124,731
ASSISTANT BUILDING & GROUNDS OFFICER	00322A	4.0	241,534	4.0	246,364
STAFF ATTORNEY I	08828A	1.0	60,059	1.0	61,260
SENIOR MONITORING AND EVALUATION	08825A	2.0	119,391	2.0	121,757
OFFICE MANAGER (JUDICIAL)	08824A	1.0	58,655	1.0	59,828
EXECUTIVE SECRETARY	04423A	1.0	56,891	1.0	58,029
SENIOR MANAGEMENT ANALYST	04423A	5.0	282,538	5.0	288,102
ASSISTANT SUPERVISING CLERK	04422A	2.0	111,413	2.0	113,602
ADMINISTRATIVE ASSISTANT	08822A	4.0	214,512	4.0	218,800
SENIOR MANAGEMENT ANALYST (JUDICIAL)	04423A	2.0	105,444	2.0	109,961
LAW CLERK (JUDICIARY)	08823A	17.0	896,191	17.0	908,535
CHAMBER LAW CLERK (JUDICIAL)	08823A	11.0	577,443	11.0	588,929
DEPUTY LAW LIBRARIAN	04426A	1.0	51,873	1.0	52,910
SENIOR ADMINISTRATIVE AIDE	04421A	0.6	29,966	0.6	30,326
SENIOR MONITORING AND EVALUATION	04425A	1.0	49,698	1.0	50,691
ADMINISTRATIVE AIDE	04416A	1.0	49,692	1.0	53,273
MONITORING & EVALUATION SPECIALIST	08823A	3.0	148,468	3.0	154,669
ADMINISTRATIVE ASSISTANT II (JUDICIAL)	08820A	1.0	49,178	1.0	51,243
FACILITIES AND OPERATIONS OFFICER	00320A	1.0	49,178	1.0	51,243
RECORDS CUSTODIAN-DOCUMENTS DIST.(STATE	04418A	3.0	146,962	3.0	149,864
ADMINISTRATIVE ASSISTANT II	08815A	1.0	48,692	1.0	49,648
DEPUTY CLERK	04420A	5.0	241,574	5.0	247,593
CONFIDENTIAL SECRETARY	08817A	1.0	47,567	1.0	48,518
RECORDS CUSTODIAN DOCUMENTS DISTRIBUTION	04418A	1.0	46,922	1.0	47,861
ADMINISTRATIVE ASSISTANT II	04415A	2.0	90,030	2.0	91,791
FACILITIES AND OPERATIONS OFFICER	0J320A	1.0	42,160	1.0	43,003
SECOND ASSISTANT LAW LIBRARIAN	04411A	0.8	32,857	0.8	33,492
PRINCIPAL CLERK TYPIST	04410A	1.0	35,917	1.0	36,635
ADMINISTRATIVE AIDE	08810A	0.6	20,676	0.6	21,082
JANITOR (JUDICIAL)	00307A	1.0	33,287	1.0	34,656
Subtotal		160.7	\$12,055,198	160.7	\$12,316,496

Personnel

Judicial Department - Constitution Supreme Court

	Grade	FY 2015		FY 2016	
		FTE	Cost	FTE	Cost
Overtime		-	281,857	-	281,857
Stipends		-	5,500	-	5,500
Temporary and Seasonal		-	48,750	-	65,000
Turnover		-	(385,335)	-	(373,188)
Subtotal		-	(\$49,228)	-	(\$20,831)
Total Salaries		160.7	\$12,005,970	160.7	\$12,295,665
Benefits					
Payroll Accrual			66,829		67,979
FICA			858,828		878,545
Retiree Health			730,869		663,296
Health Benefits			1,850,691		2,022,891
Retirement			2,912,316		2,995,761
Subtotal			\$6,419,533		\$6,628,472
Total Salaries and Benefits		160.7	\$18,425,503	160.7	\$18,924,137
Cost Per FTE Position (Excluding Temporary and Seasonal)			\$114,354		\$117,356
Statewide Benefit Assessment			\$502,906		\$513,806
Payroll Costs		160.7	\$18,928,409	160.7	\$19,437,943
Purchased Services					
Information Technology			490,440		520,440
Clerical and Temporary Services			20,031		3,781
Management & Consultant Services			7,000		7,000
Legal Services			87,185		87,185
Other Contracts			126,446		126,446
Training and Educational Services			30,000		30,000
Design and Engineering Services			64,052		64,052
Subtotal			\$825,154		\$838,904
Total Personnel		160.7	\$19,753,563	160.7	\$20,276,847
Distribution By Source Of Funds					
General Revenue		150.7	\$17,911,882	150.7	\$18,401,486
Federal Funds		1.0	\$120,580	1.0	\$123,241
Restricted Receipts		9.0	\$1,721,101	9.0	\$1,752,120
Total All Funds		160.7	\$19,753,563	160.7	\$20,276,847

The Program

Judicial Department - Constitution Superior Court

Program Mission

Provide timely and fair adjudication of all cases within the jurisdiction of the Superior Court.

Maintain a complete and accurate record for all cases that are filed with the Superior Court.

Provide a written transcript of any proceeding or appeal.

Program Description

The program budget for Superior Court includes the operation of the Court itself, administrative services, and the operation of the clerks' offices.

Superior Court has four locations: Providence/Bristol, Kent, Washington, and Newport Counties. It has jurisdiction over all felony cases and misdemeanor cases which have been appealed or waived from the District Court. The Court also hears all civil cases where the amount at issue exceeds \$10,000, equity cases wherein injunctive relief is sought, civil cases that are appealed from the District Court, and all probate and zoning appeals. The Superior Court has concurrent original jurisdiction with the District Court in all other actions at law in which the amount in controversy exceeds \$5,000 yet does not exceed \$10,000. The administrative office of the Court handles all case scheduling, supervises the court secretaries and stenographers, and provides other administrative services.

Each Court location has a clerk's office which is responsible for maintaining the records of the court. This includes creating files for each case, filing all papers that are received, updating the record in each case to reflect court proceedings and the papers that have been filed, and maintaining and marking all exhibits of evidence.

Other major programs include jury selection, court-annexed arbitration, court ordered restitution, and administration of jurors' fees and expenses. In FY 1995, a Gun Court was established to adjudicate offenses where guns are involved and the planning process began for the Adult Drug Court. In FY 2002, the Adult Drug Court was established preceded by the FY 2001 establishment of the Business Calendar.

Statutory History

The Superior Court is a statutorily authorized court. The jurisdiction and sessions of the court, and the role and responsibilities of the clerks, secretaries and stenographers of the court are outlined in Title 8 Chapters 2 through 7 of the Rhode Island General Laws.

The Budget

Judicial Department - Constitution Superior Court

	2013 Audited	2014 Audited	2015 Enacted	2015 Revised	2016 Recommend
Expenditures By Subprogram					
Superior Court Operations	20,181,982	20,457,106	20,693,191	21,487,163	21,848,893
Jury Operations	1,622,418	1,588,327	1,800,766	1,598,469	1,711,453
Total Expenditures	\$21,804,400	\$22,045,433	\$22,493,957	\$23,085,632	\$23,560,346
Expenditures By Object					
Personnel	18,034,115	18,254,022	18,729,305	19,180,084	19,693,523
Operating Supplies and Expenses	1,252,975	1,300,798	1,145,063	1,298,465	1,301,863
Assistance and Grants	2,491,628	2,460,863	2,607,589	2,532,025	2,489,902
Subtotal: Operating Expenditures	21,778,718	22,015,683	22,481,957	23,010,574	23,485,288
Capital Purchases and Equipment	25,682	29,750	12,000	75,058	75,058
Total Expenditures	\$21,804,400	\$22,045,433	\$22,493,957	\$23,085,632	\$23,560,346
Expenditures By Funds					
General Revenue	21,487,253	21,736,162	22,144,027	22,693,155	23,209,940
Federal Funds	110,376	104,171	47,552	92,477	50,406
Restricted Receipts	206,771	205,100	302,378	300,000	300,000
Total Expenditures	\$21,804,400	\$22,045,433	\$22,493,957	\$23,085,632	\$23,560,346

Personnel

Judicial Department - Constitution Superior Court

	Grade	FY 2015		FY 2016	
		FTE	Cost	FTE	Cost
Unclassified					
PRESIDING JUSTICE (SUPERIOR COURT)	08807F	1.0	203,829	1.0	207,906
ASSOCIATE JUSTICE	08805F	21.0	3,601,802	21.0	3,674,625
SPECIAL MAGISTRATE	08803F	1.0	170,117	1.0	173,520
MAGISTRATE	08803F	2.0	325,822	2.0	332,287
ADMINISTRATIVE CLERK	08846A	1.0	159,728	1.0	162,922
GENERAL MAGISTRATE	08803F	1.0	159,259	1.0	162,444
CLERK (PROVIDENCE COUNTY)	08839A	1.0	124,550	1.0	126,928
ADMINISTRATOR, ARBITRATION PROGRAM	08839A	1.0	100,592	1.0	102,573
GENERAL CHIEF CLERK	08835A	1.0	93,807	1.0	95,683
CLERK (NEWPORT COUNTY)	08832A	1.0	91,857	1.0	93,694
DEPUTY ADMINISTRATOR/CLERK	08834A	1.0	90,574	1.0	92,393
JURY COMMISSIONER	08837A	1.0	86,630	1.0	93,081
CONFIDENTIAL INVESTIGATOR	08831A	1.0	86,591	1.0	88,323
CLERK (WASHINGTON COUNTY)	08832A	1.0	84,234	1.0	85,894
ASSISTANT ADMINISTRATOR/MANAGEMENT AND CLERK (KENT COUNTY)	08834A	1.0	82,371	1.0	83,994
ADMINISTRATIVE CLERK	08829A	2.0	162,293	2.0	165,464
SPECIAL ASSISTANT (JUDICIAL)	08829A	1.0	77,275	1.0	80,002
ASSOCIATE JURY COMMISSIONER	08833A	1.0	76,319	1.0	77,823
PROJECT MANAGER	08830A	2.0	149,545	2.0	156,686
PROJECT COORDINATOR	04426A	1.0	70,970	1.0	72,377
SUPERVISING CLERK	08826A	2.0	141,558	2.0	144,376
SUPERVISING CLERK	04426A	1.0	68,906	1.0	70,285
ASSISTANT INTAKE SUPERVISOR (FAMILY COURT)	08828A	1.0	68,809	1.0	70,186
COURT REPORTER	00127A	27.7	1,905,693	27.7	1,968,599
PRINCIPAL ASSISTANT ADMINISTRATOR	04425A	1.0	68,119	1.0	69,469
PROJECT MANAGER (JUDICIAL)	08830A	1.0	67,156	1.0	72,126
MANAGER OF CALENDAR SERVICES (PROVIDENCE)	04424A	1.0	64,188	1.0	65,979
ASSISTANT MANAGER OF CALENDAR SERVICES	04423A	1.0	63,316	1.0	64,447
DEPUTY CLERK I	04424A	3.0	186,581	3.0	192,625
ASSISTANT SUPERVISING CLERK	04422A	2.0	122,944	2.0	125,307
ASSISTANT MANAGER OF CALENDAR SERVICES COORDINATOR, SPECIAL PROJECTS	04423A	1.0	60,770	1.0	61,985
08827A	1.0	57,756	1.0	61,047	
SENIOR ADMINISTRATIVE AIDE	04421A	1.0	57,593	1.0	58,717
PRODUCTION SYSTEMS SPECIALIST	04420A	1.0	55,776	1.0	56,855
ASSISTANT ADMINISTRATIVE OFFICER	08821A	1.0	54,778	1.0	55,874
LAW CLERK (JUDICIARY)	08823A	1.0	52,230	1.0	53,269
DEPUTY CLERK	04420A	4.0	208,011	4.0	212,141
MONITORING & REVALUATION SPECIALIST (JUD)	08823A	2.0	103,986	2.0	107,655
COURT SECRETARY/JUDICIAL, SUPERIOR COURT	08823A	1.0	51,174	1.0	52,182
MANAGER OF CALENDAR SERVICES (OUT	04424A	1.0	50,433	1.0	53,241
DEPUTY CLERK (SUPERIOR COURT)	04420A	22.0	1,093,012	22.0	1,124,105
CONFIDENTIAL SECRETARY	08817A	1.0	47,567	1.0	48,518
ASSISTANT COURT SECRETARY/JUDICIAL	08821A	3.0	142,450	3.0	145,272
ELECTRONIC COURT REPORTER	04419A	1.0	46,305	1.0	47,231

Personnel

Judicial Department - Constitution Superior Court

	Grade	FY 2015		FY 2016	
		FTE	Cost	FTE	Cost
ADMINISTRATIVE AIDE	04416A	1.0	45,131	1.0	48,288
POLICY AIDE	04418A	4.0	180,249	4.0	184,071
ELECTRONIC COURT REPORTER	00119A	2.0	89,000	2.0	91,904
SENIOR ADMINISTRATIVE AIDE	04417A	1.0	43,350	1.0	44,217
ASSISTANT CLERK (SUPERIOR COURT)	04418A	8.0	343,233	8.0	354,413
ADMINISTRATIVE ASSISTANT II	08815A	1.0	42,711	1.0	43,565
ADMINISTRATIVE AIDE	04415A	1.0	38,720	1.0	38,494
ADMINISTRATIVE ASSISTANT	08814A	1.0	36,892	1.0	38,336
GENERAL OPERATIONS ASSISTANT	04414A	9.0	322,741	9.0	335,244
RECORDS CLERK/DATA ENTRY AIDE	04410A	10.0	325,925	10.0	336,611
DATA ENTRY AIDE (JUDICIAL)	04410A	1.0	32,129	1.0	33,969
Subtotal		164.7	\$12,419,728	164.7	\$12,743,216
Overtime		-	41,385	-	41,385
Stipends		-	5,000	-	5,000
Temporary and Seasonal		-	37,737	-	45,400
Turnover		-	(429,705)	-	(446,013)
Subtotal		-	(\$345,583)	-	(\$354,228)
Total Salaries		164.7	\$12,074,145	164.7	\$12,388,988
Benefits					
Payroll Accrual			67,950		69,115
FICA			835,516		859,009
Retiree Health			560,376		508,635
Health Benefits			1,683,654		1,860,355
Retirement			3,041,697		3,090,267
Subtotal			\$6,189,193		\$6,387,381
Total Salaries and Benefits		164.7	\$18,263,338	164.7	\$18,776,369
Cost Per FTE Position (Excluding Temporary and Seasonal)			\$110,659		\$113,728
Statewide Benefit Assessment			\$515,791		\$528,779
Payroll Costs		164.7	\$18,779,129	164.7	\$19,305,148

Personnel

Judicial Department - Constitution Superior Court

	Grade	FY 2015		FY 2016	
		FTE	Cost	FTE	Cost
Purchased Services					
Clerical and Temporary Services			54,580		42,000
Legal Services			308,800		308,800
Other Contracts			20,575		20,575
Design and Engineering Services			5,000		5,000
Medical Services			12,000		12,000
Subtotal			\$400,955		\$388,375
Total Personnel		164.7	\$19,180,084	164.7	\$19,693,523
Distribution By Source Of Funds					
General Revenue		164.7	\$18,829,767	164.7	\$19,343,123
Federal Funds		-	\$50,317	-	\$50,400
Restricted Receipts		-	\$300,000	-	\$300,000
Total All Funds		164.7	\$19,180,084	164.7	\$19,693,523

The Program

Judicial Department - Constitution Family Court

Program Mission

Adjudicate the cases within the jurisdiction of the Family Court in a timely and fair manner.

Provide assistance to families involved in litigation before the court.

Program Description

The program budget for Family Court includes the operation of the Court itself, the administrative office of the Court, the clerks' offices, and the operation of several ancillary programs, including juvenile intake services, the Family Services Unit, the Collections Unit and the Court Appointed Special Advocate Unit.

The Family Court handles all criminal cases involving juveniles; juvenile status offenses, such as truancy and disobedience; all cases where parents have been charged with neglect, abandonment or abuse of their children; and other miscellaneous cases involving children, such as child marriages and paternity issues. The Court also hears all divorces and issues stemming from a divorce, such as orders for child support and temporary allowances.

The Court has offices in Providence, Kent, Newport and Washington Counties. There are clerks' offices in each of these locations, and the office staff is responsible for preparing all court calendars and maintaining records of the Court. All papers are filed with the clerk's office, and this office sets up a file for each case and maintains an up-to-date record of court proceedings and the papers that have been filed.

Because of the special nature of the Family Court, it provides a variety of services to families. For example, the Family Services Unit provides alcohol and drug screens and supervises visitation, in addition to providing investigative services to the court. The Child Support Collections Unit handles the collection and disbursement of child support payments. Specialty courts include the Juvenile Drug Court, the Family Treatment Drug Court, the Domestic Violence Court, the Truancy Court, and the Mental Health Court Clinic.

Statutory History

The Family Court is authorized by statute. The composition and jurisdiction of the Family Court is identified in Title 8 Chapter 10 of the Rhode Island General Laws.

The Budget

Judicial Department - Constitution Family Court

	2013 Audited	2014 Audited	2015 Enacted	2015 Revised	2016 Recommend
Expenditures By Subprogram					
Operations	21,202,853	22,352,346	20,955,333	23,356,449	23,932,580
Total Expenditures	\$21,202,853	\$22,352,346	\$20,955,333	\$23,356,449	\$23,932,580
Expenditures By Object					
Personnel	18,064,501	19,581,798	19,288,647	20,573,321	21,115,881
Operating Supplies and Expenses	1,982,782	1,608,601	488,329	1,608,776	1,638,250
Assistance and Grants	1,141,050	1,114,613	1,149,857	1,084,694	1,084,531
Subtotal: Operating Expenditures	21,188,333	22,305,012	20,926,833	23,266,791	23,838,662
Capital Purchases and Equipment	14,520	47,334	28,500	89,658	93,918
Total Expenditures	\$21,202,853	\$22,352,346	\$20,955,333	\$23,356,449	\$23,932,580
Expenditures By Funds					
General Revenue	18,030,704	19,638,173	19,245,592	20,408,788	20,918,555
Federal Funds	3,172,149	2,714,173	1,709,741	2,947,661	3,014,025
Total Expenditures	\$21,202,853	\$22,352,346	\$20,955,333	\$23,356,449	\$23,932,580

Personnel

Judicial Department - Constitution Family Court

	Grade	FY 2015		FY 2016	
		FTE	Cost	FTE	Cost
Unclassified					
CHIEF JUDGE, FAMILY COURT	08807F	1.0	203,829	1.0	207,924
ASSOCIATE JUSTICE	08805F	11.0	1,913,897	11.0	1,952,219
MAGISTRATE	08803F	8.0	1,281,545	8.0	1,307,017
MAGISTRATE OF THE FAMILY COURT	08803F	1.0	159,259	1.0	162,444
ADMINISTRATIVE CLERK	08846A	1.0	159,084	1.0	162,212
ADMINISTRATOR - CLERK (FAMILY COURT)	08843A	1.0	138,260	1.0	141,001
ADMINISTRATOR/DIRECTOR (CASA)(JUDICIAL)	08843A	1.0	137,993	1.0	142,864
DEPUTY EXECUTIVE	08841A	1.0	132,392	1.0	135,028
DIRECTOR OF INTERGOVERNMENTAL RELATIONS	08840A	1.0	121,063	1.0	123,426
SENIOR POLICY ASSOCIATE	08838A	1.0	115,840	1.0	118,142
DEPUTY ADMINISTRATIVE CLERK (JUDICIAL)	08834A	1.0	102,648	1.0	104,624
DEPUTY ADMINISTRATOR/CLERK	08834A	2.0	195,613	2.0	204,408
DEPUTY DIRECTOR-COMMUNITY AFFAIRS	08834A	2.0	191,571	2.0	195,358
ADMINISTRATIVE MANAGER	08834A	1.0	94,505	1.0	96,283
STAFF ATTORNEY V (JUDICIAL)	08836A	4.0	375,497	4.0	383,008
EXECUTIVE DIRECTOR/EXECUTIVE	08831A	1.0	88,434	1.0	90,202
STAFF ATTORNEY V	08836A	2.0	174,840	2.0	178,315
EXECUTIVE DIRECTOR	08836A	1.0	84,683	1.0	86,352
PRINCIPAL SUPERVISORY CLERK	08830A	1.0	82,182	1.0	87,261
STAFF ATTORNEY III	08832A	8.0	656,783	8.0	672,479
PROJECT MANAGER (JUDICIAL)	08830A	1.0	81,476	1.0	83,105
EXECUTIVE DIRECTOR/EXECUTIVE	08831A	1.0	77,379	1.0	78,927
PRINCIPAL PLANNING AND PROGRAM SPECIALIST	05728A	2.0	149,927	2.0	152,909
COURT REPORTER	00127A	15.0	1,055,228	15.0	1,075,766
ASSISTANT INTAKE SUPERVISOR (FAMILY COURT)	08828A	6.0	416,216	6.0	430,451
ASSOCIATE EXECUTIVE ASSISTANT	08826A	1.0	66,704	1.0	67,977
COORDINATOR SPECIAL PROJECTS (JUCICIAL)	08827A	1.0	66,218	1.0	67,543
CASA COORDINATOR	05722A	1.0	62,027	1.0	63,268
SUPERVISING DEPUTY CLERK (FAMILY COURT)	0J322A	6.0	364,457	6.0	371,743
SOCIAL CASEWORKER II (JUDICIAL)	05724A	8.0	475,031	8.0	488,594
VOLUNTEER COORDINATOR	0J322A	1.0	56,669	1.0	57,802
ADMINISTRATIVE COORDINATOR	0J320A	1.0	55,028	1.0	56,128
ADMINISTRATIVE ASSISTANT	0J320A	1.0	55,027	1.0	56,127
EXECUTIVE SECRETARY	08823A	2.0	108,998	2.0	112,236
MEDIATION COUNSELOR	0J320A	5.0	268,184	5.0	273,545
DEPUTY CLERK	0J320A	21.0	1,088,138	21.0	1,109,890
SENIOR ADMINISTRATIVE AIDE	0J317A	3.0	152,157	3.0	154,405
ADMINISTRATIVE ASSISTANT (JUDICIAL)	0J320A	1.0	49,998	1.0	50,997
DEPUTY CLERK (JUDICIAL)	0J320A	3.0	144,038	3.0	146,918
ELECTRONIC COURT REPORTER	00119A	9.6	457,829	9.6	471,602
SOCIAL CASEWORKER (JUDICIAL)	0J322A	2.0	94,055	2.0	95,935
DOMESTIC VIOLENCE LIAISON	0J318A	1.0	43,109	1.0	45,510
ADMINISTRATIVE ASSISTANT	0J315A	2.0	84,933	2.0	85,686
SENIOR DATA ENTRY OPERATOR	0J312A	12.0	503,450	12.0	511,837
ADMINISTRATIVE ASSISTANT (JUDICIAL)	08814A	1.0	41,286	1.0	42,246

Personnel

Judicial Department - Constitution Family Court

	Grade	FY 2015		FY 2016	
		FTE	Cost	FTE	Cost
SENIOR DATA ENTRY OPERATOR	08812A	0.5	20,469	0.5	21,664
FISCAL CLERK	0J310A	1.0	40,558	1.0	41,369
ADMINISTRATIVE ASSISTANT II	08815A	0.6	22,967	0.6	23,689
CLERK TYPIST	0J305A	1.0	37,865	1.0	38,584
CLERK SECRETARY	0J314A	1.0	36,361	1.0	37,887
DATA ENTRY AIDE (JUDICIAL)	0J310A	8.0	279,502	8.0	286,747
DATA ENTRY AIDE	0J310A	4.0	137,288	4.0	139,867
Subtotal		173.7	\$13,002,490	173.7	\$13,291,521
Overtime		-	57,800	-	37,302
Stipends		-	1,800	-	1,800
Temporary and Seasonal		-	364,518	-	503,000
Turnover		-	(440,583)	-	(429,472)
Subtotal		-	(\$16,465)	-	\$112,630
Total Salaries		173.7	\$12,986,025	173.7	\$13,404,151
Benefits					
Payroll Accrual			70,983		72,174
FICA			900,172		921,875
Retiree Health			703,482		637,224
Health Benefits			1,975,911		2,191,220
Retirement			2,992,347		3,066,418
Workers Compensation			1,800		1,800
Subtotal			\$6,644,695		\$6,890,711
Total Salaries and Benefits		173.7	\$19,630,720	173.7	\$20,294,862
Cost Per FTE Position (Excluding Temporary and Seasonal)			\$110,936		\$113,962
Statewide Benefit Assessment			\$541,125		\$553,144
Payroll Costs		173.7	\$20,171,845	173.7	\$20,848,006
Purchased Services					
Clerical and Temporary Services			141,375		7,200
Management & Consultant Services			119,426		120,000
Other Contracts			97,035		97,035
Training and Educational Services			26,640		26,640
Design and Engineering Services			17,000		17,000
Subtotal			\$401,476		\$267,875
Total Personnel		173.7	\$20,573,321	173.7	\$21,115,881
Distribution By Source Of Funds					
General Revenue		162.4	\$18,812,621	162.4	\$19,314,795
Federal Funds		11.3	\$1,760,700	11.3	\$1,801,086
Total All Funds		173.7	\$20,573,321	173.7	\$21,115,881

The Program

Judicial Department - Constitution District Court

Program Mission

Adjudicate the cases within the jurisdiction of the District Court in a timely and fair manner.

Maintain a complete and accurate record for every case.

Program Description

The District Court consists of a chief judge, an administrative judge and associate judges. The court is also served by two magistrates. The program budget for the District Court includes the cost of operation for the Court itself and the operation of the clerk's offices. The District Court handles all misdemeanor cases, all civil cases where the amount in dispute is under \$5,000, trespass and ejectment cases between landlords and tenants, and all small claims, which includes certain civil cases where the amount in dispute is under \$2,500. The District Court also has concurrent jurisdiction with the Superior Court over all matters in which the amount in dispute is greater than \$5,000 but less than \$10,000. The District Court handles most felony bail hearings in capital and other serious cases. The District Court also holds hearings on commitments under the mental health and drug abuse laws and handles certain agency appeals. The Court has four locations, in Providence, Kent, Newport and Washington Counties, with a clerk's office at each location. The clerks' offices maintain all the records for the Court. As with the other courts, all papers are filed in the clerk's office. The office creates a file for every case and maintains an up-to-date record on what has happened in the case. In addition, the Pretrial Services Unit was established in FY 2002 to provide pre-arraignment and post-arraignment services to defendants.

Statutory History

The District Court is a statutorily authorized court. The powers and jurisdiction of the Court are defined in Title 8 Chapter 8 of the Rhode Island General Laws.

The Budget

Judicial Department - Constitution District Court

	2013 Audited	2014 Audited	2015 Enacted	2015 Revised	2016 Recommend
Expenditures By Subprogram					
Operations	11,825,392	12,163,405	11,801,337	12,239,032	12,554,797
Total Expenditures	\$11,825,392	\$12,163,405	\$11,801,337	\$12,239,032	\$12,554,797
Expenditures By Object					
Personnel	10,069,829	10,287,863	10,083,519	10,758,280	11,072,544
Operating Supplies and Expenses	394,119	475,403	409,712	345,917	347,418
Assistance and Grants	1,335,081	1,285,798	1,283,606	1,114,835	1,114,835
Subtotal: Operating Expenditures	11,799,029	12,049,064	11,776,837	12,219,032	12,534,797
Capital Purchases and Equipment	26,363	114,341	24,500	20,000	20,000
Total Expenditures	\$11,825,392	\$12,163,405	\$11,801,337	\$12,239,032	\$12,554,797
Expenditures By Funds					
General Revenue	11,297,285	11,985,946	11,508,535	12,039,781	12,355,546
Federal Funds	53,662	-	-	30,000	30,000
Restricted Receipts	474,445	177,459	292,802	169,251	169,251
Total Expenditures	\$11,825,392	\$12,163,405	\$11,801,337	\$12,239,032	\$12,554,797

Personnel

Judicial Department - Constitution District Court

	Grade	FY 2015		FY 2016	
		FTE	Cost	FTE	Cost
Unclassified					
CHIEF JUDGE DISTRICT COURT	08807F	1.0	186,844	1.0	190,580
ADMINISTRATIVE JUDGE	08805F	1.0	181,438	1.0	185,067
MAGISTRATE	08803F	1.0	173,737	1.0	177,212
ASSOCIATE JUDGE, DISTRICT COURT	08810F	11.0	1,791,726	11.0	1,849,498
ADMINISTRATIVE CLERK	08846A	1.0	161,219	1.0	164,414
DEPUTY EXECUTIVE	08841A	1.0	131,821	1.0	134,458
CHIEF CLERK OF DISTRICT COURTS	08840A	1.0	110,609	1.0	112,821
ASSISTANT ADMINISTRATOR/POLICY & PROGRAMS	04437A	1.0	104,926	1.0	107,024
ASSISTANT ADMINISTRATOR/POLICY & PROGRAMS	08837A	1.0	91,256	1.0	93,081
ADMINISTRATIVE CLERK (DISTRICT COURT)	04433A	1.0	90,978	1.0	92,798
CLERK (WASHINGTON COUNTY)	04432A	1.0	90,400	1.0	92,153
CLERK (NEWPORT COUNTY)	04432A	1.0	89,509	1.0	91,299
ASSISTANT ADMINISTRATOR/MANAGEMENT AND DEPUTY DIRECTOR (JUDICIAL)	08834A	1.0	82,998	1.0	85,928
ADMINISTRATIVE CLERK	04432A	1.0	81,717	1.0	83,691
ADMINISTRATIVE CLERK	04429A	1.0	78,410	1.0	79,933
SUPERVISING CLERK	04426A	2.0	139,279	2.0	142,065
ADMINISTRATIVE CLERK OF OFFICE SERVICES	04427A	1.0	67,219	1.0	68,564
DEPUTY CLERK I	04424A	3.0	194,504	3.0	198,386
DEPUTY CHIEF INVESTIGATOR	04426A	1.0	64,508	1.0	65,798
COORDINATOR SPECIAL PROJECTS (JUCICIAL)	08827A	1.0	64,148	1.0	67,542
DEPUTY CHIEF INVESTIGATOR	04426A	2.0	127,550	2.0	130,102
ADMINISTRATIVE CLERK	08829A	1.0	62,074	1.0	65,625
ASSOCIATE EXECUTIVE ASSISTANT	08826A	3.0	171,527	3.0	176,987
SUPERVISING DEPUTY CLERK-TRAINING OFFICER	04423A	17.0	968,253	17.0	1,001,359
OFFICE MANAGER	04424A	2.0	113,628	2.0	117,597
ADMINISTRATIVE ASSISTANT TO CHIEF	08826A	1.0	55,534	1.0	57,212
ASSISTANT CLERK/RESEARCH	04418A	1.0	51,188	1.0	52,212
DEPUTY CLERK	04420A	1.0	44,698	1.0	46,875
GENERAL OPERATIONS ASSISTANT	04414A	1.0	44,246	1.0	45,131
SENIOR OPERATIONS CLERK	04416A	6.0	242,026	6.0	253,814
DATA ENTRY OPERATOR	04412A	9.0	323,904	9.0	327,480
RECORDS CLERK/DATA ENTRY AIDE	04410A	18.0	603,723	18.0	623,221
RECORDS AIDE (JUDICIARY)	04410A	1.0	33,125	1.0	34,612
Subtotal		96.0	\$6,818,722	96.0	\$7,014,539

Personnel

Judicial Department - Constitution District Court

	Grade	FY 2015		FY 2016	
		FTE	Cost	FTE	Cost
Overtime		-	33,000	-	33,000
Temporary and Seasonal		-	126,540	-	131,500
Turnover		-	(296,195)	-	(278,509)
Subtotal		-	(\$136,655)	-	(\$114,009)
Total Salaries		96.0	\$6,682,067	96.0	\$6,900,530
Benefits					
Payroll Accrual			37,817		38,580
FICA			461,561		475,015
Retiree Health			305,690		277,313
Health Benefits			1,107,597		1,208,762
Retirement			1,802,103		1,832,281
Subtotal			\$3,714,768		\$3,831,951
Total Salaries and Benefits		96.0	\$10,396,835	96.0	\$10,732,481
Cost Per FTE Position (Excluding Temporary and Seasonal)			\$106,982		\$110,427
Statewide Benefit Assessment			\$282,945		\$291,063
Payroll Costs		96.0	\$10,679,780	96.0	\$11,023,544
Purchased Services					
Clerical and Temporary Services			29,733		233
Other Contracts			48,767		48,767
Subtotal			\$78,500		\$49,000
Total Personnel		96.0	\$10,758,280	96.0	\$11,072,544
Distribution By Source Of Funds					
General Revenue		96.0	\$10,638,280	96.0	\$10,952,544
Federal Funds		-	\$30,000	-	\$30,000
Restricted Receipts		-	\$90,000	-	\$90,000
Total All Funds		96.0	\$10,758,280	96.0	\$11,072,544

The Program

Judicial Department - Constitution Traffic Tribunal

Program Mission

Adjudicate the cases within the jurisdiction of the Traffic Tribunal in a timely and fair manner.

Maintain a complete and accurate record for every case.

Program Description

The Traffic Tribunal was created effective July 1, 1999. It is the successor to the Administrative Adjudication Court. It consists of associate judges and magistrates. It is under the supervision of the Chief Magistrate, who is the administrative head of the Traffic Tribunal with the power to make rules for regulating practice, procedure and business within the Traffic Tribunal.

The Traffic Tribunal hears and determines civil traffic violations. It has exclusive jurisdiction over certain offenses and concurrent jurisdiction with the Municipal Courts over others. The Traffic Tribunal hears certain administrative appeals for the Registry of Motor Vehicles. The Appeals Panel of the Traffic Tribunal hears appeals from the Traffic Tribunal and the Municipal Courts. The Traffic Tribunal does not hear those offenses committed in places within the exclusive jurisdiction of the United States, or criminal motor vehicle offenses such as driving so as to endanger resulting in death, and driving while under the influence of alcohol and drugs, which state law specifies will be heard under the jurisdiction of other courts. In 2013 the Traffic Tribunal received exclusive jurisdiction over civil offenses related to possession of marijuana violations of one ounce (1 oz.) or less. The Traffic Tribunal currently sits at its main courthouse in the John O. Pastore Center, 670 New London Avenue in Cranston; Traffic Tribunal also sits in Wakefield.

Statutory History

The powers and jurisdiction of the Traffic Tribunal are defined in Title 8 Chapter 8.2 of the Rhode Island General Laws. The 1999 session of the General Assembly passed Senate Bill S932 entitled the Rhode Island Traffic Safety and Accountability Act of 1999. This act abolished the Administrative Adjudication Court effective July 1, 1999 and created the Traffic Tribunal.

The Budget

Judicial Department - Constitution Traffic Tribunal

	2013 Audited	2014 Audited	2015 Enacted	2015 Revised	2016 Recommend
Expenditures By Subprogram					
Operations	7,933,583	8,326,527	8,760,119	8,430,692	8,542,221
Total Expenditures	\$7,933,583	\$8,326,527	\$8,760,119	\$8,430,692	\$8,542,221
Expenditures By Object					
Personnel	7,017,863	7,116,059	7,792,452	7,442,951	7,553,168
Operating Supplies and Expenses	467,820	447,889	507,214	528,410	529,722
Assistance and Grants	426,892	426,665	443,453	426,665	426,665
Subtotal: Operating Expenditures	7,912,575	7,990,613	8,743,119	8,398,026	8,509,555
Capital Purchases and Equipment	21,008	335,914	17,000	32,666	32,666
Total Expenditures	\$7,933,583	\$8,326,527	\$8,760,119	\$8,430,692	\$8,542,221
Expenditures By Funds					
General Revenue	7,933,583	8,326,527	8,760,119	8,430,692	8,542,221
Total Expenditures	\$7,933,583	\$8,326,527	\$8,760,119	\$8,430,692	\$8,542,221

Personnel

Judicial Department - Constitution Traffic Tribunal

	Grade	FY 2015		FY 2016	
		FTE	Cost	FTE	Cost
Unclassified					
JUDGE ADMINISTRATIVE ADJUDICATION COURT	08803F	2.0	349,558	2.0	356,508
CHIEF MAGISTRATE	08810F	1.0	174,630	1.0	178,122
MAGISTRATE TRAFFIC TRIBUNAL	08803F	5.0	814,392	4.0	675,620
EXECUTIVE DIRECTOR (JUDICIAL)	08844A	1.0	125,466	1.0	127,975
ASSISTANT DIRECTOR POLICY OFFICE	08839A	1.0	121,233	1.0	123,596
ASSISTANT LEGAL COUNSEL (TRANSPORTATION)	08822A	0.6	62,027	0.6	63,268
SENIOR POLICY ASSOCIATE	08838A	1.0	95,262	1.0	102,146
POLICY ASSOCIATE (JUDICIAL)	08834A	1.0	86,143	1.0	91,077
PRINCIPAL SUPERVISORY CLERK	08830A	1.0	83,247	1.0	84,912
ADMINISTRATOR/ADMINISTRATIVE	04438A	1.0	81,478	1.0	83,052
ADMINISTRATIVE CLERK I	04429A	1.0	80,297	1.0	81,887
COORDINATOR SPECIAL PROJECTS (JUCICIAL)	08827A	1.0	74,102	1.0	75,584
ADMINISTRATIVE CLERK OF OFFICE SERVICES	04427A	3.0	217,365	3.0	221,613
PRINCIPAL ASSISTANT ADMINISTRATOR	04425A	2.0	121,581	2.0	127,442
ASSISTANT SUPERVISING CLERK	04422A	0.6	35,202	0.6	35,612
ADMINISTRATIVE CLERK	04429A	1.0	58,229	1.0	59,393
DEPUTY CLERK	04420A	4.0	211,829	4.0	216,028
DEPUTY CLERK I	04424A	1.0	46,021	1.0	47,275
DEPUTY CLERK (SUPERIOR COURT)	04420A	3.0	136,786	3.0	143,438
SECURITY OFFICER	04419A	9.0	403,121	9.0	412,648
SUPERVISING DEPUTY CLERK-TRAINING OFFICER	04423A	1.0	44,317	1.0	46,995
SENIOR OPERATIONS CLERK	04416A	7.0	297,654	7.0	312,365
GENERAL OPERATIONS ASSISTANT	04414A	6.0	240,252	6.0	249,834
ADMINISTRATIVE ASSISTANT	04413A	6.0	238,579	6.0	244,306
ASSISTANT ADMINISTRATIVE SECRETARY	04412A	1.0	39,409	1.0	40,197
ADMINISTRATIVE ASSISTANT (JUDICIAL)	04413A	5.0	193,500	5.0	198,395
DATA ENTRY OPERATOR	04412A	5.0	182,832	5.0	186,489
RECORDS CLERK/DATA ENTRY AIDE	04410A	7.0	235,621	7.0	242,896
MAGISTRATE	08803F	-	-	1.0	155,060
Subtotal		78.2	\$4,850,133	78.2	\$4,983,733
Overtime		-	45,000	-	12,000
Stipends		-	2,800	-	2,800
Turnover		-	(518,590)	-	(418,881)
Subtotal		-	(\$470,790)	-	(\$404,081)
Total Salaries		78.2	\$4,379,343	78.2	\$4,579,652
Benefits					
Payroll Accrual			27,605		26,563
FICA			335,667		326,905
Retiree Health			296,478		256,226
Health Benefits			897,054		892,455
Retirement			1,224,404		1,194,961
Subtotal			\$2,781,208		\$2,697,110

Personnel

Judicial Department - Constitution Traffic Tribunal

	Grade	FY 2015		FY 2016	
		FTE	Cost	FTE	Cost
Total Salaries and Benefits		78.2	\$7,160,551	78.2	\$7,276,762
Cost Per FTE Position (Excluding Temporary and Seasonal)			\$91,567		\$93,053
Statewide Benefit Assessment			\$202,400		\$196,406
Payroll Costs		78.2	\$7,362,951	78.2	\$7,473,168
Purchased Services					
Other Contracts			80,000		80,000
Subtotal			\$80,000		\$80,000
Total Personnel		78.2	\$7,442,951	78.2	\$7,553,168
Distribution By Source Of Funds					
General Revenue		78.2	\$7,442,951	78.2	\$7,553,168
Total All Funds		78.2	\$7,442,951	78.2	\$7,553,168

The Program

Judicial Department - Constitution Worker's Compensation Court

Program Mission

Hear all disputes regarding workers' compensation claims.

Decide all controversies efficiently, effectively, and economically.

Program Description

The Workers' Compensation Court is a member of the unified judicial system and has the same authority and power to subpoena and to cite and punish for civil contempt as exists in the Superior Court. It hears and decides all controversies as they pertain to Workers' Compensation in an efficient, effective, and economical manner. Presently, it has nine judges and one chief judge as well as support staff which includes administrators, hearing reporters, and clerical staff. It is supported from the Workers' Compensation Administrative Fund.

Upon the filing of a petition for benefits arising out of a work-related injury case, a case file is set up and notices are sent to all parties. Before proceeding to a full evidentiary hearing, a judge conducts a pretrial conference, with a view of expediting the case and reducing the issues in dispute to a minimum. If the matter can not be resolved informally the judge must enter a pretrial order as to the right of the employee to receive benefits (approximately 70 percent of all litigation is concluded at this point).

Those cases not resolved at pretrial are heard by the same judge for trial. At the trial, a judge will hear all questions. The judge will then decide the merits of the controversy pursuant to the law and a fair preponderance of the evidence. From this decision a decree is entered. At this stage either party may appeal to the Appellate Division. The Appellate Division consists of three judges assigned by the Chief Judge, none of whom is the Trial Judge.

The Appellate Division judges review the transcript and the record of the case along with the appellant's reasons for appeal and memoranda of law. The Appellate Division then decides the matter and a final decree of the Appellate Division is entered. If either party is aggrieved by the decision of the Appellate Division, they may petition the Supreme Court for a writ of certiorari. Upon petition, the Supreme Court may review any decree of the Workers' Compensation Court.

Statutory History

Title 28, Chapters 29 through 38 of the Rhode Island General Laws includes provisions relating to the Workers' Compensation Court.

The Budget

Judicial Department - Constitution Worker's Compensation Court

	2013 Audited	2014 Audited	2015 Enacted	2015 Revised	2016 Recommend
Expenditures By Subprogram					
Operations	7,359,644	7,228,824	7,712,640	7,614,932	7,763,807
Total Expenditures	\$7,359,644	\$7,228,824	\$7,712,640	\$7,614,932	\$7,763,807
Expenditures By Object					
Personnel	5,769,270	5,940,921	6,318,399	6,330,660	6,479,535
Operating Supplies and Expenses	695,207	533,239	591,060	602,185	602,185
Assistance and Grants	815,395	735,367	803,181	682,087	682,087
Subtotal: Operating Expenditures	7,279,872	7,209,527	7,712,640	7,614,932	7,763,807
Capital Purchases and Equipment	79,772	19,297	-	-	-
Total Expenditures	\$7,359,644	\$7,228,824	\$7,712,640	\$7,614,932	\$7,763,807
Expenditures By Funds					
Restricted Receipts	7,359,644	7,228,824	7,712,640	7,614,932	7,763,807
Total Expenditures	\$7,359,644	\$7,228,824	\$7,712,640	\$7,614,932	\$7,763,807

Personnel

Judicial Department - Constitution Worker's Compensation Court

	Grade	FY 2015		FY 2016	
		FTE	Cost	FTE	Cost
Unclassified					
CHIEF JUDGE, WORKERS COMPENSATION COURT	08807F	1.0	199,583	1.0	203,574
JUDGE, WORKERS COMPENSATION COURT	08810F	8.0	1,333,106	8.0	1,359,710
ADMINISTRATIVE CLERK (WORKERS COMP COURT)	00846A	1.0	163,122	1.0	166,317
ADMINISTRATOR, WORKERS' COMPENSATION	08841A	1.0	129,075	1.0	131,657
DEPUTY ADMINISTRATOR WORKERS'	08837A	1.0	109,507	1.0	111,697
MEDICAL ADVISORY BOARD ADMINISTRATOR	04440A	1.0	108,406	1.0	110,574
ASSISTANT ADMINISTRATOR/POLICY & PROGRAMS	08837A	1.0	105,935	1.0	113,128
EXECUTIVE ASSISTANT (JUDICIAL)	00336A	1.0	101,195	1.0	103,219
PROJECT MANAGER (JUDICIAL)	08830A	1.0	81,167	1.0	87,190
SENIOR ASSISTANT ADMINISTRATOR	00326A	1.0	69,019	1.0	71,849
COURT REPORTER	00327A	8.0	535,428	6.0	433,036
EXECUTIVE SECRETARY TO CHIEF JUDGE	08825A	1.0	64,124	1.0	65,346
ADMINISTRATIVE ASSISTANT/CONFIDENTIAL	04424A	3.0	181,648	3.0	185,233
DEPUTY CLERK	00320A	10.0	529,868	10.0	541,626
LAW CLERK (JUDICIARY)	08823A	2.0	104,460	2.0	106,538
SENIOR ASSISTANT ADMINISTRATOR	0J323A	2.0	92,626	2.0	94,478
SENIOR MANAGEMENT ANALYST	0J323A	1.0	46,313	1.0	47,239
MEDICAL ADVISORY BOARD COORDINATOR	04418A	1.0	44,789	1.0	45,685
DATA ENTRY OPERATOR	00312A	3.0	109,517	3.0	113,611
DATA ENTRY OPERATOR	0J312A	1.0	34,787	1.0	35,483
COURT REPORTER	0J327A	-	-	2.0	112,684
Subtotal		49.0	\$4,143,675	49.0	\$4,239,874
Overtime		-	7,500	-	7,500
Turnover		-	(145,029)	-	(127,196)
Subtotal		-	(\$137,529)	-	(\$119,696)
Total Salaries		49.0	\$4,006,146	49.0	\$4,120,178
Benefits					
Payroll Accrual			22,698		23,135
FICA			276,019		284,778
Retiree Health			187,823		155,780
Health Benefits			571,021		609,533
Retirement			1,040,312		1,054,587
Subtotal			\$2,097,873		\$2,127,813
Total Salaries and Benefits		49.0	\$6,104,019	49.0	\$6,247,991
Cost Per FTE Position (Excluding Temporary and Seasonal)			\$124,572		\$127,510
Statewide Benefit Assessment			\$171,941		\$176,844
Payroll Costs		49.0	\$6,275,960	49.0	\$6,424,835

Personnel

Judicial Department - Constitution Worker's Compensation Court

	Grade	FY 2015		FY 2016	
		FTE	Cost	FTE	Cost
Purchased Services					
Information Technology			28,700		28,700
Legal Services			10,500		10,500
Other Contracts			15,500		15,500
Subtotal			\$54,700		\$54,700
Total Personnel		49.0	\$6,330,660	49.0	\$6,479,535
Distribution By Source Of Funds					
Restricted Receipts		49.0	\$6,330,660	49.0	\$6,479,535
Total All Funds		49.0	\$6,330,660	49.0	\$6,479,535

The Program

Judicial Department - Constitution Judicial Tenure & Discipline

Program Mission

Ensure the integrity of the Rhode Island Court System.

Investigate reasonable allegations of wrongdoing by Rhode Island judges.

Recommend, when appropriate, sanctions to be imposed against Rhode Island judges.

Program Description

The Commission on Judicial Tenure and Discipline, a program of the Rhode Island Judiciary, is responsible for conducting investigations of judges suspected of or charged with misconduct. The commission, upon receiving from any person a verified statement, not unfounded or frivolous, alleging facts indicating that a Justice of the Supreme Court, the Superior Court, the Family Court, the District Court, the Workers' Compensation Court, the Traffic Tribunal and the Probate Court judges or magistrates and judicial officers appointed pursuant to Rhode Island General Laws is guilty of a serious violation of the Code of Judicial Conduct or the Canons of Judicial Ethics, or of a willful and persistent failure to perform his/her duties, or disabling substance abuse, or conduct that brings the judicial office into serious disrepute, or that such a judge has a physical or mental disability that seriously interferes and will continue to interfere with the performance of his/her duties, shall make a preliminary investigation to determine whether formal proceedings shall be instituted and a hearing held. The Commission may, on its own initiative, make such a preliminary investigation, without receiving a verified statement, to determine whether formal proceedings shall be instituted and a hearing held.

When formal proceedings are ordered, the justice is given formal notice of the charges and of the time fixed for a public hearing. The justice is required to appear at the hearing, may be represented by counsel, offer evidence and otherwise participate in said hearing. Recommendation concerning the disciplining of any justice shall be made in a report to the Chief Justice of the Supreme Court. The Supreme Court is required to grant a review if requested by said justice. After the hearing, the Supreme Court may affirm, modify or reject the Commission's recommendation(s).

Statutory History

The Commission on Judicial Tenure and Discipline was established in 1974 under Rhode Island Public Law 1972, Ch. 136, Section 1 for the purpose of conducting investigations upon the filing of a verified complaint or upon its own initiative of the conduct of judges of the Supreme, Superior, Family and District Courts. Subsequent enactments in P.L.1983, Ch. 26 and P.L. 1990, Ch. 332, Article 1, sec. 13 and P.L. 1991, Ch. 132, sec. 2 as well as P.L. 1991, Ch. 205, sec. 2 and P.L. 1996, Ch. 312 enlarged the jurisdiction to include the Workers' Compensation Court, the Traffic Tribunal as well as all judges of Probate Courts in any city or town in the State of Rhode Island. P.L. 2007, Ch. 178 altered the composition of the Commission.

The Budget

Judicial Department - Constitution Judicial Tenure & Discipline

	2013 Audited	2014 Audited	2015 Enacted	2015 Revised	2016 Recommend
Expenditures By Subprogram					
Operations	113,327	107,834	115,513	119,161	121,527
Total Expenditures	\$113,327	\$107,834	\$115,513	\$119,161	\$121,527
Expenditures By Object					
Personnel	103,388	105,620	112,799	116,211	118,577
Operating Supplies and Expenses	9,939	2,214	2,714	2,950	2,950
Subtotal: Operating Expenditures	113,327	107,834	115,513	119,161	121,527
Total Expenditures	\$113,327	\$107,834	\$115,513	\$119,161	\$121,527
Expenditures By Funds					
General Revenue	113,327	107,834	115,513	119,161	121,527
Total Expenditures	\$113,327	\$107,834	\$115,513	\$119,161	\$121,527

Personnel

Judicial Department - Constitution Judicial Tenure & Discipline

	Grade	FY 2015		FY 2016	
		FTE	Cost	FTE	Cost
Unclassified					
EXECUTIVE ASSISTANT TO THE CHAIRPERSON	08829A	1.0	71,596	1.0	73,028
Subtotal		1.0	\$71,596	1.0	\$73,028
Total Salaries		1.0	\$71,596	1.0	\$73,028
Benefits					
Payroll Accrual			410		417
FICA			5,477		5,587
Retiree Health			4,833		4,382
Health Benefits			5,897		6,529
Retirement			17,419		17,994
Subtotal			\$34,036		\$34,909
Total Salaries and Benefits		1.0	\$105,632	1.0	\$107,937
Cost Per FTE Position (Excluding Temporary and Seasonal)			\$105,632		\$107,937
Statewide Benefit Assessment			\$3,079		\$3,140
Payroll Costs		1.0	\$108,711	1.0	\$111,077
Purchased Services					
Legal Services			7,500		7,500
Subtotal			\$7,500		\$7,500
Total Personnel		1.0	\$116,211	1.0	\$118,577
Distribution By Source Of Funds					
General Revenue		1.0	\$116,211	1.0	\$118,577
Total All Funds		1.0	\$116,211	1.0	\$118,577